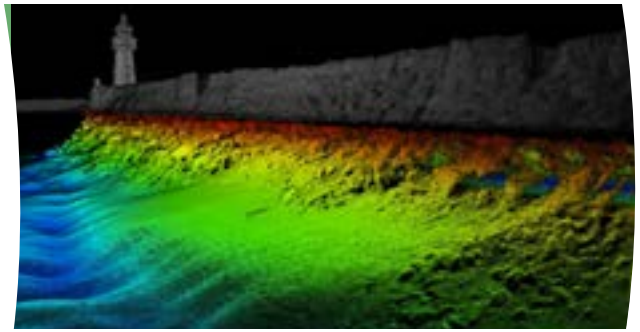




Bathymetric and geomorphological studies



DESCRIPTION

The bathymetric survey provides a detailed understanding of the topography of the seabed. Complemented by side-scan sonar surveys and bottom imaging, it allows detailed characterisation of the seabed..



OBJECTIVES

To provide high-resolution cartographic and eco-cartographic support, both for the planning of plans, programmes and projects, and for the control of the evolution of the marine environment in the face of certain actions.



Target

Public administrations and companies, private entities, port authorities, marinas, marinas, etc.



ACTIONS

- Bathymetric surveys with single beam and multibeam technology.
- Bathymetric monitoring of dredging actions, relocation of dredged material, beach regeneration/maintenance, etc.
- Cartography of substrate and/or habitat typology (complemented with SBL and bottom images).



RESULTS / ADVANTAGES

- Three-dimensional images of the submerged coastline with an accuracy adequate to the requirements of other types of information: biological, geomorphological, etc.
- Weighted analysis of the different areas of the study zone according to the different environmental aspects (land use, natural communities, heritage values, etc.).
- Categorization of areas according to their relevance to anthropic interventions, degrees of protection, vulnerability, carrying capacity, etc.

